



Downlights

The choice is endless, but remember these three points to consider are; lamp type, colour render and the application. When planning positioning of downlights make sure you have adequate illumination.

- Lamp type
- Led colour render
- Down light application Fire rated or open backed
- Fixed, tilt, rotate, IP rated



Satin



Chrome



White



Brass

GU10, MAINS 240v

Code:	Description:	Trade Price:
FR50HCSN/1	Satin nickel GU10 downlight	£5.20
FR50HCCH/1	Chrome GU10 downlight	£5.20
FR50HCWH/1	White GU10 downlight	£5.20
FR50HCBR/1	Brass GU10 downlight	£5.20

MR16, LOW VOLTAGE 12v

FR50DCSN/1	Satin nickel MR16 downlight	£5.20
FR50DCCH/1	Chrome MR16 downlight	£5.20
FR50DCWH/1	White MR16 downlight	£5.20
FR50DCBR/1	Brass MR16 downlight	£5.20

Cut out: 66mm / Bezel dia: 80mm / Depth: 5mm / Void height: 90mm
 Not supplied with lamps.

TILT, TWIST & LOCK



Satin



Chrome



White

GU10, MAINS 240v

Code:	Description:	Trade Price:
FR50HTSN/1	Satin nickel GU10 tilt downlight	£7.90
FR50HTCH/1	Chrome GU10 tilt downlight	£7.90
FR50HTWH/1	White GU10 tilt downlight	£7.90

MR16, LOW VOLTAGE 12v

FR50DTSN/1	Satin nickel MR16 tilt downlight	£7.90
FR50DTCH/1	Chrome MR16 tilt downlight	£7.90
FR50DTWH/1	White MR16 tilt downlight	£7.90

Cut out: 83mm / Bezel dia: 95mm / Depth: 6-18mm / Void height: 110mm
Not supplied with lamps.

IP65 FIXED



Chrome



Satin



White



Brass

GU10, MAINS 240v

Code:	Description:	Trade Price:
FR501CSDSCH/1	Satin nickel, IP65 GU10 downlight	£9.30
FR501CSDCH/1	Chrome, IP65 GU10 downlight	£9.30
FR501CSDWH/1	White, IP65 GU10 downlight	£9.30
FR501CSDBR/1	Brass, IP65 GU10 downlight	£9.30

MR16, LOW VOLTAGE 12v

FR501CSDSCH	Satin nickel, IP65 MR16 downlight	£9.30
FR501CSDCH	Chrome, IP65 MR16 downlight	£9.30
FR501CSDWH	White, IP65 MR16 downlight	£9.30
FR501CSDBR	Brass, IP65 MR16 downlight	£9.30

Cut out: 70mm / Bezel dia: 84mm / Depth: 7mm / Void height: 98mm
Not supplied with lamps.

SQUARE TILT, TWIST & LOCK



Satin



Chrome



White

GU10, MAINS 240v

Code:	Description:	Trade Price:
FR0609SN	Satin square GU10 tilt downlight	£10.98
FR0609CH	Chrome square GU10 tilt downlight	£10.98
FR0609WH	White square GU10 tilt downlight	£10.98

MR16, LOW VOLTAGE 12v

FR0510SN	Satin square MR16 low voltage tilt downlight	£10.98
FR0510CH	Chrome square MR16 low voltage tilt downlight	£10.98
FR0510WH	White square MR16 low voltage tilt downlight	£10.98

Cut out: 82mm / Bezel: 96x96mm / Depth: 4-16mm / Void height: 98mm / Tilt: 45°
Lamp not supplied.

CAST WALL WASH DOWNLIGHTS



Satin



Chrome



White

MR16, LOW VOLTAGE 12v

FR0509SN	Satin wall wash downlight. MR16 low voltage	£12.10
FR0509CH	Chrome wall wash downlight. MR16 low voltage	£12.10
FR0509WH	White wall wash downlight. MR16 low voltage	£12.10

Cut out: 95mm / Bezel dia: 110mm / Depth: 3-67mm / Void height: 100mm / Tilt: 90° / Rotate: 350°

EYEBALLS



White



Brass

GU10, MAINS 240v

Code:	Description:	Trade Price:
FR50HEWH	White GU10 eyeball	£8.68
FR50HEBR	Brass GU10 eyeball	£8.68

MR16, LOW VOLTAGE 12v

FR50EEWH	White MR16 low voltage eyeball	£8.68
FR50EEBR	Brass MR16 low voltage eyeball	£8.68

Cut out: 85mm / Bezel dia: 110mm / Depth: 24-38mm / Void height: 115mm / Tilt: 45° / Rotate: 360°
Lamp not included.

ADJUSTABLE, TWIST & LOCK



Chrome



White



Brass

GU10, MAINS 240v

Code:	Description:	Trade Price:
FR50HACH	Chrome GU10 adjustable downlight.	£10.87
FR50HAWH	White GU10 adjustable downlight.	£10.87
FR50HABR	Brass GU10 adjustable downlight.	£10.87

MR16, LOW VOLTAGE 12v

FR50DACH	Chrome MR16 adjustable downlight.	£10.87
FR50DAWH	White MR16 adjustable downlight.	£10.87
FR50DABR	Brass MR16 adjustable downlight.	£10.87

Cut out: 92mm / Bezel dia: 100mm / Depth: 4-55mm / Void height: 125mm / Tilt: 45° / Rotate: 350°
Lamp not included.

ROUND DROP GLASS



Satin



Chrome



White

GU10, MAINS 240v

Code:	Description:	Trade Price:
FR0607SN	Satin, GU10 drop glass downlight	£9.16
FR0607CH	Chrome, GU10 drop glass downlight	£9.16
FR0607WH	White, GU10 drop glass downlight	£9.16

MR16, LOW VOLTAGE 12v

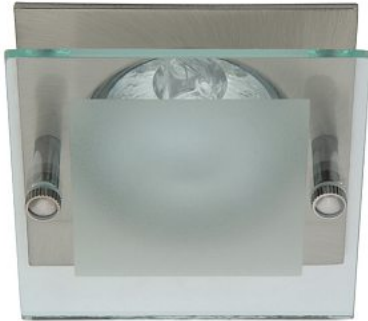
FR0511SN	Satin, MR16, low voltage drop glass downlight	£9.16
FR0511CH	Chrome, MR16 low voltage drop glass downlight	£9.16
FR0511WH	White, MR16 low voltage drop glass downlight	£9.16

Cut out: 62mm / Bezel dia: 78mm / Depth: 25mm / Void height: 98mm / Glass dia: 80mm
Lamp not supplied.

SQUARE DROP GLASS



Chrome



Satin



White

GU10, MAINS 240v

Code:	Description:	Trade Price:
FR0608SN	Satin, GU10 drop glass downlight	£9.16
FR0608CH	Chrome, GU10 drop glass downlight	£9.16
FR0608WH	White, GU10 drop glass downlight	£9.16

MR16, LOW VOLTAGE 12v

FR0512SN	Satin, MR16, low voltage drop glass downlight	£9.16
FR0512CH	Chrome, MR16 low voltage drop glass downlight	£9.16
FR0512WH	White, MR16 low voltage drop glass downlight	£9.16

Cut out: 62mm / Bezel dia: 75x75mm / Depth: 25mm / Void height: 98mm / Glass: 78x78mm
Lamp not supplied.

FIRE RATED FIXED, TWIST & LOCK



Chrome

Satin

White

GU10, MAINS 240v

Code:	Description:	Trade Price:
FR0610SN	Satin nickel. Cast, fixed, fire rated downlight	£14.55
FR0610CH	Chrome. Cast, fixed, fire rated downlight	£14.55
FR0610WH	White. Cast, fixed, fire rated downlight	£14.55

MR16, LOW VOLTAGE 12v

FR0515SN	Satin nickel. Cast, fixed, fire rated downlight	£14.55
FR0515CH	Chrome. Cast, fixed, fire rated downlight	£14.55
FR0515WH	White. Cast, fixed, fire rated downlight	£14.55

Cut out: 72mm / Bezel dia: 86mm / Depth: 5mm / Void height: 110mm
Not supplied with lamps.

FIRE RATED TILT, TWIST & LOCK



Satin



Chrome



White

GU10, MAINS 240v

Code:	Description:	Trade Price:
FR0611SN	Satin nickel. Cast, tilt fire rated downlight	£16.65
FR0611CH	Chrome. Cast, tilt fire rated downlight	£16.65
FR0611WH	White. Cast, tilt fire rated downlight	£16.65

MR16, LOW VOLTAGE 12v

FR0516SN	Satin nickel. Cast, tilt fire rated downlight	£16.65
FR0516CH	Chrome. Cast, tilt fire rated downlight	£16.65
FR0516WH	White. Cast, tilt fire rated downlight	£16.65

Cut out: 83mm / Bezel dia: 100mm / Depth: 6 - 20mm / Void height: 110mm / Tilt: 30°
Not supplied with lamps.

FIRE RATED, IP65 FIXED TWIST & LOCK



White

Satin

Chrome

GU10, MAINS 240v

Code:	Description:	Trade Price:
FR0612SN	Satin nickel. Cast, IP65 fire rated downlight	£14.88
FR0612CH	Chrome. Cast, IP65 fire rated downlight	£14.88
FR0612WH	White. Cast, IP65 fire rated downlight	£14.88

MR16, LOW VOLTAGE 12v

FR0517SN	Satin nickel. Cast, IP65 fire rated downlight	£14.88
FR0517CH	Chrome. Cast, IP65 fire rated downlight	£14.88
FR0517WH	White. Cast, IP65 fire rated downlight	£14.88

Cut out: 72mm / Bezel dia: 86mm / Depth: 6mm / Void height: 123mm
 Not supplied with lamps.

ECO - RANGE FIRE RATED DOWNLIGHTS



Satin



Chrome



White

GU10, FIXED TWIST & LOCK 240V

Code:	Description:	Trade Price:
FR1101SN	Satin nickel. Cast, fixed, fire rated downlight.	£9.95
FR1101CH	Chrome. Cast, fixed, fire rated downlight.	£9.95
FR1101WH	White. Cast, fixed, fire rated downlight.	£9.95

Cut out: 71mm / Bezel dia: 86mm / Depth: 5mm / Void height: 108mm. Not supplied with lamps.



Satin



Chrome



White

GU10, IP65 240V

FR1103SN	Satin nickel. Cast, IP65 fire rated downlight.	£10.90
FR1103CH	Chrome. Cast, IP65 fire rated downlight.	£10.90
FR1103WH	White. Cast, IP65 fire rated downlight.	£10.90

Cut out: 74mm / Bezel dia: 87mm / Depth: 5mm / Void height: 123mm. Not supplied with lamps.

LOW VOLTAGE LIGHTING TRANSFORMERS



LX060C



LX060/3

Code:	Description:	Trade Price:
LX060C	10-60va transformer, with cables	£5.48
LX060/3	10-60va transformer, with 3 way amp connector	£9.90

Length: 105mm / Depth: 30mm / Height: 21mm



LX105T



LX105/6

Code:	Description:	Trade Price:
LX105T	20-105va transformer, with terminals	£10.23
LX105/6	20-105va transformer, with 6 way amp connector	£14.06

Length: 111mm / Depth: 38mm / Height: 28mm



LX150T

Code:	Description:	Trade Price:
LX150T	35/150va transformer, with terminals	£ 21.70

Length: 180mm / Depth: 45mm / Height: 45mm

LIGHTING SPARES



FRHL



FRGUL



FRSTBHL



FRSTBGU10



FRSTB



FRCP



FRTB



AMP06



AMP03

Code:	Description:	Trade Price:
FRHL	MR16 halogen lamp holder. Length 150mm	£1.65
FRGUL	GU10 lamp holder. Length 170mm	£1.65
FRSTBHL	MR16 lamp holder, stirrup bar & terminal block	£2.48
FRSTBGU10	GU10 lamp holder, stirrup bar, terminal block & earth point	£2.48
FRSTB	Stirrup bar & terminal block	£1.21
FRTB	Porcelain terminal block	£1.21
FRCP	Spring clip, lamp retaining ring	£0.47
AMP03	3 way amp connector	£1.98
AMP06	6 way amp connector	£2.62

DECORATIVE PULL SWITCHES



FRBDPS
Brass



FRCDPS
Chrome

Code:	Description:	Trade Price:
FRBDPS	Brass pull switch	£22.78
FRCDPS	Chrome pull switch	£22.78

Lamps

LED GX53 LAMPS



GX53, 6 watt

Code:	Description:	Trade Price:
LAMP10	LED GX53, 6 watt, cool white lamp – 6500K, 560 Lumen	£11.30
LAMP11	LED GX53, 6 watt, warm white lamp - 3000K 540 Lumen	£11.30



GX53, 3.5 watt

Code:	Description:	Trade Price:
LAMP05	LED GX53, 3.5 watt, cool white lamp - 4500K, 320 Lumen	£12.40
LAMP07	LED GX53, 3.5 watt, warm white lamp - 3000K, 300 Lumen	£12.40

LAMPS



G4 LED RETRO FIT LAMP

Code:	Description:	Trade Price:
LAMP01	Warm white G4 LED lamp.	£8.14
LAMP02	Cool white G4 LED lamp.	£8.14



Code:	Description:	Trade Price:
LAMP1208	GU10 LED COB 5w lamp, warm white. 3000-3500K	£9.61
LAMP1209	GU10 LED COB 5w lamp, cool white. 6000-6500K	£9.61



Kitchen Lighting

The range of products to illuminate your kitchen is very extensive, as are the areas from the floor all the way to the ceiling. You should always illuminate work top surfaces well, ensuring that there is quality and approved lighting for the area. This is important for a surface where you will be preparing food. Kitchen units and flooring can be enhanced by background lighting; this will give a professional effect to the space.

Remember that kitchen lighting products must be fitted with the upmost care. Safety is paramount and if you are unsure about installing kitchen lighting, consult a professional.

Some key features of this section include:

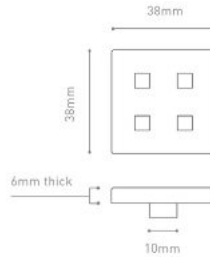
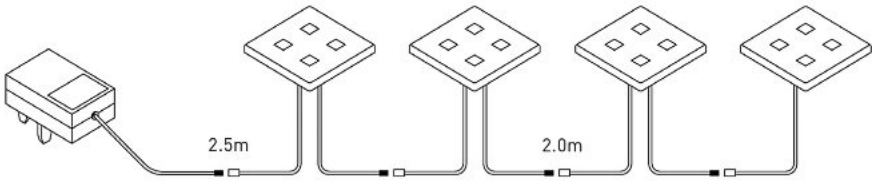
- Plinth lighting for background effects
- Inner cabinet lights for convenience
- Under unit lights – ideal when preparing food
- Over unit lights for show
- Spotlights and linear lighting

LED DECK/PLINTH LIGHT KITS



Code:	Description:	Trade Price:
LED2601	5 light plinth light kit, warm white. Each light 0.4w – 7 Lumens. IP67. Supplied as a plug and play fit system. Supplied with 13Amp plug in driver.	£29.50
LED2602	10 light plinth light kit, warm white. Each light 0.4w – 7 Lumens. IP67. Supplied as a plug and play fit system. Supplied with 13Amp plug in driver.	£41.55

LED PLINTH LIGHTS



Code:	Description:	Trade Price:
LED1800	Satin silver 4 light plinth kit with driver.	£42.00
LED1802	Single satin silver plinth light.	£8.80

White LED, 0.5w per light, 13A plug in transformer – driver.
 Cut out: 10mm / Bezel: 38x38mm / Bezel depth: 6mm.

MAINS VOLTAGE UNDER UNIT LIGHTS



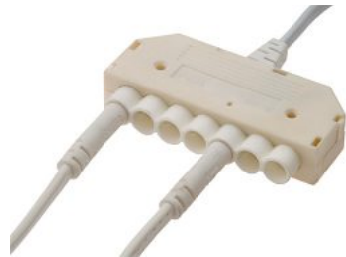
LED0701/2



LED0705/6



LED0703/4



Code:	Description:	Trade Price:
LED0701	Mains voltage recessed LED spotlight with 1.5m lead and HV connector. Dia:66mm x 14mm - Cut out: 55mm Lamp ref 3000K Warm White 3Watts	£14.15
LED0702	Mains voltage recessed LED spotlight with 1.5m lead and HV connector. Dia:66mm x 14mm - Cut out: 55mm Lamp ref 6000K Cool White 3Watts	£14.15
LED0703	Mains voltage LED spotlight with 1.5m lead and HV connector & surface mounting round base. Dia: 68 x15mm Lamp ref 3000K Warm White 3Watts	£16.25
LED0704	Mains voltage LED spotlight with 1.5m lead and HV connector & surface mounting round base. Dia: 68x15mm Lamp ref 6000K Cool White 3watts	£16.25
LED0705	Mains voltage LED spotlight with 1.5m lead and HV connector & stainless steel triangle base. Size: 125mm width max x 48mm height max x 138mm length Lamp Ref 3000K Warm White 3Watts	£16.75
LED0706	Mains voltage recessed LED spotlight with 1.5m lead and HV connector. Stainless steel triangle base. Size: 125mm width max x 48mm height max x 138mm length Lamp Ref 6000K Cool White 3Watts	£16.75
LED0707	HV 1.0m extension cable	£2.90
LED0708	HV 6-way connection cable with 1.5m cable + 13amp BS plug	£11.90

TRIANGULAR SURFACE GX53 UNDER UNIT LIGHTS



FR0211SN/C



FR0211SN/B



FR0211SN/L

TRIANGULAR SURFACE FITTING, BASE ONLY

Code:	Description:	Trade Price:
FR0211SN/B	Satin GX53 triangular surface fitting, base only	£10.90

WITH 6 WATT COB NEW LED LAMP

FR0211SN/CCW	Satin GX53 triangle with cool white LED lamp – 6500K, 560 Lumen	£23.50
FR0211SN/CWW	Satin GX53 triangle with warm white lamp – 3000K, 540 Lumen	£23.50

WITH 3.5 WATT LED LAMP

FR0211SN/L	Satin GX53 triangular fitting with cool white LED lamp – 4500K, 320 Lumen	£29.50
FR0211SN/L1	Satin GX53 triangular fitting with warm white LED lamp – 3000K, 300 Lumen	£29.50

Width: 155mm / Length: 170mm / Height: 50mm / Lamp: GX53 / Voltage: 240v / Cable size: 1.5m
 These fittings do not require a driver

METAL GX53 UNDER UNIT LIGHTS



FR0206SN/C



FR0206SN/B



FR0206SN/L

ROUND SURFACE FITTING, BASE ONLY

Code:	Description:	Trade Price:
FR0206SN/B	Satin GX53 surface fitting, base only	£9.60

WITH 6 WATT COB NEW LED LAMP

FR0206SN/CCW	Satin GX53 fitting with cool white lamp – 6500K, 560 Lumen	£21.90
FR0206SN/CWW	Satin GX53 fitting with warm white lamp – 3000K, 540 Lumen	£21.90

WITH 3.5 WATT LED LAMP

FR0206SN/L	Satin GX53 surface fitting with cool white LED lamp – 4500K, 320 Lumen	£28.00
FR0206SN/L1	Satin GX53 surface fitting with warm white LED lamp – 3000K, 300 Lumen	£28.00

Dia: 82mm / Height: 32mm / Lamp: GX53 / Voltage: 240v / Cable size: 1.5m
 These fittings do not require a driver

ROUND SURFACE GX53 UNDER UNIT LIGHTS



FR0203SR/C



FR0203SR/B



FR0203SR/L

ROUND SURFACE FITTING, BASE ONLY

Code:	Description:	Trade Price:
FR0203SR/B	Silver GX53 surface fitting, base only	£8.25

WITH 6 WATT COB NEW LED LAMP

FR0203SR/CCW	Silver GX53 fitting with cool white LED lamp – 6500K, 560 Lumen	£20.50
FR0203SR/CWW	Silver GX53 fitting with warm white LED lamp – 3000K 540 Lumen	£20.50

WITH 3.5 WATT LED LAMP

FR0203SR/L	Silver GX53 surface fitting with cool white LED lamp – 4500K, 320 Lumen	£25.50
FR0203SR/L1	Silver GX53 surface fitting with warm white LED lamp – 3000K, 300 Lumen	£25.50

Dia: 82mm / Height: 28mm / Lamp: GX53 / Voltage: 240v / Cable size: 1.5m.
 These fittings do not require a driver

ROUND SURFACE GX53 UNDER UNIT LIGHTS



FR0202SR/C



FR0202SR/B



FR0202SR/L

ROUND SURFACE FITTING, BASE ONLY

Code:	Description:	Trade Price:
FR0202SR/B	Silver GX53 surface fitting, base only	£8.25

WITH 6 WATT COB NEW LED LAMP

FR0202SR/CCW	Silver GX53 fitting with cool white lamp – 6500K, 560 Lumen	£20.50
FR0202SR/CWW	Silver GX53 fitting with warm white lamp – 3000K, 540 Lumen	£20.50

WITH 3.5 WATT LED LAMP

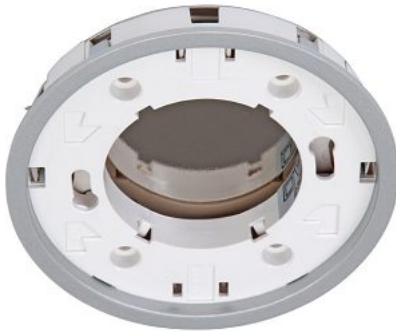
FR0202SR/L	Silver GX53 surface fitting with cool white LED lamp – 4500K, 320 Lumen	£25.50
FR0202SR/L1	Silver GX53 surface fitting with warm white LED lamp – 3000K, 300 Lumen	£25.50

Dia: 100mm / Height: 26mm / Lamp: GX53 / Voltage: 240v / Cable size: 1.5m.
 These fittings do not require a driver

ROUND SEMI-RECESSED GX53 UNDER UNIT LIGHTS



FR0201SR/C



FR0201SR/B



FR0201SR/L

ROUND SEMI RECESSED FITTING, BASE ONLY

Code:	Description:	Trade Price:
FR0201SR/B	Silver GX53 recessed fitting, base only	£8.25

WITH 6 WATT COB NEW LED LAMP

FR0201SR/CCW	Silver GX53 recessed fitting with cool white lamp – 6500K, 560 Lumen	£20.50
FR0201SR/CWW	Silver GX53 recessed fitting with warm white lamp – 3000K, 540 Lumen	£20.50

WITH 3.5 WATT LED LAMP

FR0201SR/L	Silver GX53 recessed fitting with cool white LED lamp – 4500K, 320 Lumen	£25.50
FR0201SR/L1	Silver GX53 recessed fitting with warm white LED lamp – 3000K, 300 Lumen	£25.50

Cut out: 78mm / Dia: 84mm / Cut out depth: 13mm / Height: 15mm / Lamp: GX53 / Voltage: 240v / Cable size: 1.5m. These fittings do not require a driver

ROUND LOW VOLTAGE UNDER UNIT LIGHTS SURFACE OR RECESS



SINGLE SURFACE OR RECESS G4 UNDER UNIT LIGHTS

Code:	Description:	Trade Price:
FR20CSCH	Single satin round fitting.	£9.50
FR20CCH	Single chrome round fitting.	£9.50
FR20CWH	Single white round fitting.	£9.50
FR20CBR	Single brass round fitting.	£9.50

Dia: 74mm / Height: 24mm / Lamp: G4, 20w max, 12v / Cable: 1.5m with amp plug.
Cut out 58mm (for recessing only). These products require LV transformers



These products require
LV transformers



3 LIGHT UNDER UNIT LIGHT KITS

Code:	Description:	Trade Price:
K320CSC	Satin under unit light kit, 3 lights & transformer.	£38.40
K320CCH	Chrome under unit light kit, 3 lights & transformer.	£38.40
K320CWH	White under unit light kit, 3 lights & transformer.	£38.40
K320CBR	Brass under unit light kit, 3 lights & transformer.	£38.40

Dia: 74mm / Height: 24mm / Lamp: G4, 20w max, 12v / Cable: 1.5m with amp plug.
Cut out 58mm (for recessing only). These products require LV transformers

ROUND LED UNDER UNIT LIGHTS SURFACE OR RECESS



LED1603

3 LIGHT LED UNDER UNIT LIGHT KITS

Code:	Description:	Trade Price:
LED1600	3 Chrome round kit, cool white LED, with driver	£74.60
LED1600WW	3 Chrome round kit, warm white LED, with driver	£74.60
LED1601	3 Satin round kit, cool white LED, with driver	£74.60
LED1601WW	3 Satin round kit, warm white LED, with driver	£74.60

Dia: 74mm / Height: 24mm / Lamp: G4, 1.5w LED / Cable: 1.5m with amp plug.
Cut out 58mm (for recessing only). These fittings require drivers

SINGLE LED UNDER UNIT LIGHTS

LED1602	Single chrome round light, cool white LED	£19.90
LED1602WW	Single chrome round light, warm white LED	£19.90
LED1603	Single satin round light, cool white LED	£19.90
LED1603WW	Single satin round light, warm white LED	£19.90

Dia: 74mm / Height: 24mm / Lamp: G4, 1.5w LED / Cable: 1.5m with amp plug.
Cut out 58mm (for recessing only). These fittings require drivers

LED DRIVERS

LED0601/02	LED driver, 0-6 watt with AMP connection block	£20.10
LED0602/02	LED driver, 1-15 watt with AMP connection block	£24.70

TRIANGULAR LOW VOLTAGE UNDER UNIT LIGHTS



SINGLE TRIANGULAR G4 UNDER UNIT LIGHTS

Code:	Description:	Trade Price:
FR20TCSCH	Single satin triangular fitting	£10.40
FR20TCCH	Single chrome triangular fitting	£10.40
FR20TCWH	Single white triangular fitting	£10.40
FR20TCBR	Single brass triangular fitting	£10.40

Length: 145mm / width max: 130mm / Height max: 40mm / Lamp: G4, 20w max, 12v / Cable: 1.5m with amp plug. These products require LV transformers



3 LIGHT UNDER UNIT LIGHT KITS

Code:	Description:	Trade Price:
K320TSC	Satin under unit light kit, 3 lights & transformer	£38.39
K320TCH	Chrome under unit light kit, 3 lights & transformer	£38.39
K320TWH	White under unit light kit, 3 lights & transformer	£38.39
K320TBR	Brass under unit light kit, 3 lights & transformer	£38.39

Length: 145mm / width max: 130mm / Height max: 40mm / Lamp: G4, 20w max, 12v / Cable: 1.5m with amp plug. These products require LV transformers

TRIANGULAR LED UNDER UNIT LIGHTS



3 LIGHT LED UNDER UNIT LIGHT KITS

Code:	Description:	Trade Price:
LED1500	3 Chrome triangular kit, cool white LED, with driver	£77.80
LED1500WW	3 Chrome triangular kit, warm white LED, with driver	£77.80
LED1501	3 Satin triangular kit, cool white LED, with driver	£77.80
LED1501WW	3 Satin triangular kit, warm white LED, with driver	£77.80

Length: 145mm / width max: 130mm / Height max: 40mm / Lamp: G4, 1.5w LED/ Cable: 1.5m with amp plug. These products require drivers

SINGLE LED UNDER UNIT LIGHTS

LED1502	Single chrome triangular light, cool white	£15.60
LED1502WW	Single chrome triangular light, warm white	£15.60
LED1503	Single satin triangular light, cool white	£15.60
LED1503WW	Single satin triangular light, warm white	£15.60



Length: 145mm / width max: 130mm / Height max: 40mm / Lamp: G4, 1.5w LED/ Cable: 1.5m with amp plug. These products require drivers

LED DRIVERS

LED0601/02	LED driver, 0-6 watt with AMP connection block	£20.10
LED0602/02	LED driver, 1-15 watt with AMP connection block	£24.70

T5 LINK LIGHTS & ACCESSORIES



T5 LINK LIGHTS

Code	Watts	L/mm	H/mm	D/mm	Trade price
FR0106T5	6	267	24	44	£10.05
FR0108T5	8	343	24	44	£11.00
FR0113T5	13	571	24	44	£12.40
FR0114T5	14	605	24	44	£12.65
FR0121T5	21	904	24	44	£14.85
FR0128T5	28	1204	24	44	£18.15

Warm white 3400k (colour ref)



T5 TUBES

Code	Watts	L / including pins	Trade price
LAMP901	6	225mm	£3.40
LAMP902	8	300mm	£3.70
LAMP903	13	530mm	£5.10
LAMP906	14	563mm	£5.40
LAMP904	21	863mm	£6.60
LAMP905	28	1163mm	£8.25

T5 LINK LEADS

Code	Description:	Trade Price
FR0201T5	250mm link lead	£2.30
FR0202T5	500mm link lead	£2.50
FR0203T5	1000mm link lead	£3.05



FR0301T5



FR0302T5



FR0304T5

T5 PLUGS & CONNECTORS

Code	Description:	Trade Price
FR0301T5	Male wireable plug	£1.80
FR0302T5	Female wireable plug	£1.80
FR0304T5	Corner connector	£2.65

Call us today: +44 (0)1274 304411

LED ULTRA SLIM LINK LIGHTS



Code	L/mm	H/mm	D/mm	Watts	Lumens	Volts	Trade Price
FR0101LL	222	37	23	4.5	260	240	£18.70
FR0102LL	296	37	23	6.5	480	240	£21.20
FR0103LL	525	37	23	10.5	840	240	£29.40
FR0104LL	904	37	23	12	1200	240	£37.70
FR0105LL	1157	37	23	16.2	1500	240	£41.90

Warm white 3000k (colour ref)

LINK LEADS

Code:	Description:	Trade Price:
FR0201T5	250mm link lead	£2.30
FR0202T5	500mm link lead	£2.50
FR0203T5	1000mm link lead	£3.05



FR0301T5



FR0302T5

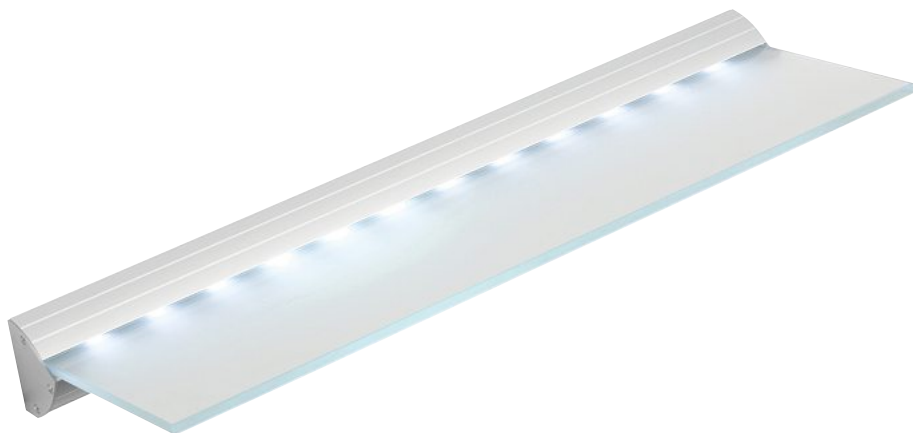


FR0304T5

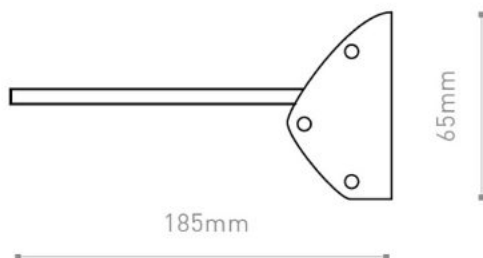
PLUGS & CONNECTORS

Code	Description:	Trade Price
FR0301T5	Male wireable plug	£1.80
FR0302T5	Female wireable plug	£1.80
FR0304T5	Corner connector	£2.65

LED GLASS SHELF LIGHT



END VIEW



GLASS LED SHELF LIGHT, WITH SWITCH

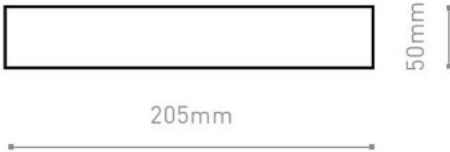
Code:	Description:	Trade Price:
FR1220SL	LED shelf light, 450mm long	£89.00
FR1221SL	LED shelf light, 600mm long	£112.50
FR1222SL	LED shelf light, 900mm long	£127.40

Height: 65mm / Depth: 185mm / 8mm toughened glass / Voltage: 240v
 Switch & cable entry is located on the right hand side when viewed from the front.
 Max load: 3kg

LED GLASS BOX SHELF LIGHT



END VIEW



GLASS & ALUMINIUM LED BOX SHELF LIGHT, FITTED WITH SWITCH

Code:	Description:	Trade Price:
FR1207SL	LED shelf light, 450mm long.	£98.00
FR1208SL	LED shelf light, 600mm long.	£112.00
FR1209SL	LED shelf light, 910mm long.	£140.00

Height: 50mm / Depth: 205mm / Voltage: 240v

Switch & cable entry is located on the right hand side when viewed from the front.

Max load: 450mm & 600mm = 2kg per 100mm / 900mm = 1.5kg per 100mm



Bathroom Lighting

All lighting used in bathrooms and shower rooms must have the correct IP rating depending on the area in which it is installed. For guidance, see page 112.

- Zone areas must be strictly followed and adhered to
- Key products include; Downlights, Mirror Lights & Low Level Lights

Brightness and illumination is a must in bathrooms, not just for show, but for safety reasons. Lighting a bathroom well helps to highlight potential hazards such as slippery surfaces.

LED MIRROR LIGHTS

MIR0360/SH

**LED Mirror light with 60 LED lights.
IP44, Rocker switch, Dual voltage shaver
socket and built in demister pad.
Switch located on the right, shaver socket
on the left.**

- Height: 600mm
- Width: 450mm
- Depth: 60mm
- LEDs: $60 \times 0.07w = 4.2w$
- Voltage: 240



Code:	Description:	Trade Price:
MIR0360/SH	60 LED mirror light. Demister, shaver socket, switched.	£187.00

MIR0232/SH

**LED Mirror light with 32 LED lights.
IP44, Rocker switch, Dual voltage shaver
socket and built in demister pad.
Switch located on the right, shaver socket
on the left.**

- Height: 500mm
- Width: 390mm
- Depth: 60mm
- LEDs: $32 \times 0.07w = 2.24w$
- Voltage: 240



Code:	Description:	Trade Price:
MIR0232/SH	32 LED mirror light. Demister, shaver socket, switched.	£140.00

IP65 FIXED



Chrome



Satin



White



Brass

GU10, MAINS 240v

Code:	Description:	Trade Price:
FR501CSDSCH/1	Satin nickel, IP65 GU10 downlight	£9.30
FR501CSDCH/1	Chrome, IP65 GU10 downlight	£9.30
FR501CSDWH/1	White, IP65 GU10 downlight	£9.30
FR501CSDBR/1	Brass, IP65 GU10 downlight	£9.30

MR16, LOW VOLTAGE 12v

FR501CSDSCH	Satin nickel, IP65 MR16 downlight	£9.30
FR501CSDCH	Chrome, IP65 MR16 downlight	£9.30
FR501CSDWH	White, IP65 MR16 downlight	£9.30
FR501CSDBR	Brass, IP65 MR16 downlight	£9.30

Cut out: 70mm / Bezel dia: 84mm / Depth: 7mm / Void height: 98mm
Not supplied with lamps.

FIRE RATED, IP65 FIXED TWIST & LOCK



White



Satin



Chrome

GU10, MAINS 240v

Code:	Description:	Trade Price:
FR0612SN	Satin nickel. Cast, IP65 fire rated downlight	£14.88
FR0612CH	Chrome. Cast, IP65 fire rated downlight	£14.88
FR0612WH	White. Cast, IP65 fire rated downlight	£14.88

MR16, LOW VOLTAGE 12v

FR0517SN	Satin nickel. Cast, IP65 fire rated downlight	£14.88
FR0517CH	Chrome. Cast, IP65 fire rated downlight	£14.88
FR0517WH	White. Cast, IP65 fire rated downlight	£14.88

Cut out: 72mm / Bezel dia: 86mm / Depth: 6mm / Void height: 123mm. Not supplied with lamps.



Satin



Chrome



White

GU10, IP65 240V

FR1103SN	Satin nickel. Cast, IP65 fire rated downlight.	£10.90
FR1103CH	Chrome. Cast, IP65 fire rated downlight.	£10.90
FR1103WH	White. Cast, IP65 fire rated downlight.	£10.90

Cut out: 74mm / Bezel dia: 87mm / Depth: 5mm / Void height: 123mm. Not supplied with lamps.



Wall Lighting

General and background lighting must be accurate, with much consideration taken. After all, you wouldn't want to create the wrong effect.

LED PICTURE LIGHTS



Brass



Antique brass



Chrome



Satin

MODERN STYLISH PICTURE LIGHT

Code:	Description:	Trade Price:
FR2113BR	Brass LED picture light. Warm white	£54.00
FR2113AT	Antique LED picture light. Warm white	£54.00
FR2113CH	Chrome LED picture light. Warm white	£54.00
FR2113SN	Satin LED picture light. Warm white	£54.00

Width: 340mm / Depth: 210mm / Base: 100x50mm / Wattage: 5.4w / 3000K / Lumen: 304 / Voltage: 240v

G9 PICTURE LIGHTS



Brass



Antique brass



Chrome



Satin

G9 PICTURE LIGHTS

Code:	Description:	Trade Price:
FR2101BR	Brass G9 picture light. Supplied with lamps	£38.80
FR2102AT	Antique brass G9 picture light. Supplied with lamps	£38.80
FR2103CH	Chrome G9 picture light. Supplied with lamps	£38.80
FR2104SN	Satin G9 picture light. Supplied with lamps	£38.80

Width: 360mm / Depth: 210mm / Base dia: 82mm / Lamp: 2 x G9 / Wattage: 25w max / Voltage: 240v

G23 PICTURE LIGHTS/LOW ENERGY



Antique brass



Chrome



Satin

TRADITIONAL PICTURE LIGHT

Code:	Description:	Trade Price:
FR2111AT	Antique brass G23 picture light. Supplied with lamp	£52.50
FR2111CH	Chrome G23 picture light. Supplied with lamp	£52.50
FR2111SN	Satin G23 picture light. Supplied with lamp	£52.50

Width: 325mm / Depth: 160mm / Height: 115mm / Base dia: 118mm /
Lamp: G23 / Wattage: 11w / Voltage: 240v

T5 PICTURE LIGHTS/LOW ENERGY



Chrome



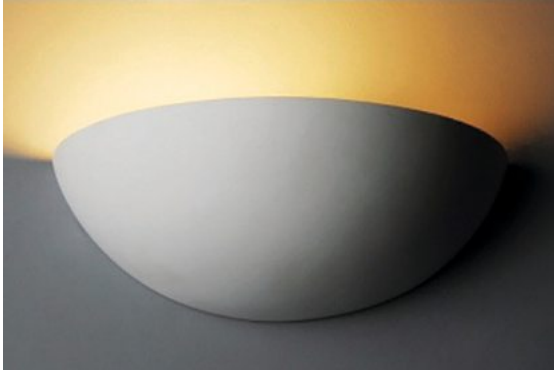
Satin

MODERN STYLISH PICTURE LIGHT WITH ROCKER SWITCH

Code:	Description:	Trade Price:
FR2112CH	Chrome T5 picture light with rocker switch. Supplied with lamp	£83.25
FR2112SN	Satin T5 picture light. Switched. Supplied with lamp	£83.25

Width: 595mm / Depth: 235mm / Base: 175 x 50 x 30D / Lamp: T5 / Wattage: 13w / Voltage: 240v

CERAMIC UPLIGHTERS



PLAIN QUARTER SPHERE UPLIGHTER

Code:	Description:	Trade Price:
QSP101	Plain quarter sphere uplighter	£32.00

E27 lamp holder. 40w max.
Width: 280mm / Depth: 140mm / Height: 140mm / 240v
*



EDGE QUARTER SPHERE UPLIGHTER

Code:	Description:	Trade Price:
QSP102	Edge quarter sphere uplighter.	£36.00

E27 lamp holder. 40w max.
Width: 320mm / Depth: 170mm / Height: 120mm / 240v

*Plaster uplighters are supplied unfinished, so that they may be finished to suit local décor.
Each unit is supplied with fixing brackets for quick & easy installation.

WHITE GU10 TRACK & ACCESSORIES



MT13WH



MT16WH



**MT01WH
MT03WH**



MT17WH



MT11WH



MT04WH

Code:	Description:	Trade Price:
MT01WH	1 Metre white track (Not supplied with live & dead ends)	£20.49
MT03WH	2 Metre white track (Not supplied with live & dead ends)	£38.23
MT13WH	White single mesh track spot	£28.88
MT16WH	White single round track spot	£28.88
MT17WH	White live end feed	£6.74
MT11WH	White dead end	£1.79
MT04WH	White mini straight connector	£5.37

WHITE GU10 TRACK & ACCESSORIES



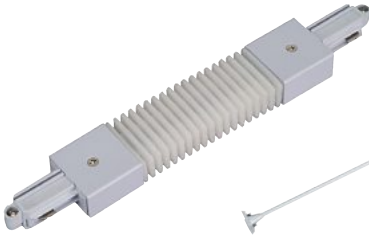
MT05WH



MT06WH



MT07WH



MT08WH



MT09WH



MT10WH



MT12WH



MT19WH



MT20WH

Code:	Description:	Trade Price:
MT05WH	White L connector	£11.55
MT06WH	White T connector	£14.58
MT07WH	White cross connector	£16.23
MT08WH	White flexi connector	£16.37
MT09WH	White ceiling connector	£27.17
MT10WH	White suspension kit 3m	£12.71
MT12WH	White support – top	£12.45
MT19WH	White centre live feed	£9.63
MT20WH	White track adaptor	£9.90

SILVER GU10 TRACK & ACCESSORIES



MT13SV



MT16SV



**MT01SV
MT03SV**



MT17SV



MT11SV



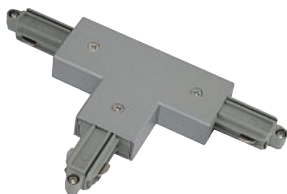
MT04SV

Code:	Description:	Trade Price:
MT01SV	1 Metre silver track (Not supplied with live & dead ends)	£25.30
MT03SV	2 Metre silver track (Not supplied with live & dead ends)	£38.23
MT13SV	Silver single mesh track spot	£28.88
MT16SV	Silver single round track spot	£28.88
MT17SV	Silver live end feed	£6.74
MT11SV	Silver dead end	£1.79
MT04SV	Silver mini straight connector	£5.37

SILVER GU10 TRACK & ACCESSORIES



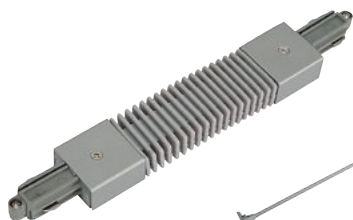
MT05SV



MT06SV



MT07SV



MT08SV



MT09SV



MT10SV



MT12SV



MT19SV



MT20SV

Code:	Description:	Trade Price:
MT05SV	Silver L connector	£11.55
MT06SV	Silver T connector	£14.58
MT07SV	Silver cross connector	£16.23
MT08SV	Silver flexi connector	£16.37
MT09SV	Silver ceiling connector	£27.17
MT10SV	Silver suspension kit 3m	£12.71
MT12SV	Silver support – top	£12.45
MT19SV	Silver centre live feed	£9.63
MT20SV	Silver track adaptor	£9.90

BLACK GU10 TRACK & ACCESSORIES



MT13BL



MT16BL



**MT01BL
MT03BL**



MT17BL



MT11BL



MT04BL

Code:	Description:	Trade Price:
MT01BL	1 Metre black track (Not supplied with live & dead ends)	£20.49
MT03BL	2 Metre black track (Not supplied with live & dead ends)	£38.23
MT13BL	Black single mesh track spot	£28.88
MT16BL	Black single round track spot	£28.88
MT17BL	Black live end feed	£6.74
MT11BL	Black dead end	£1.79
MT04BL	Black mini straight connector	£5.37

BLACK GU10 TRACK & ACCESSORIES



MT05BL



MT06BL



MT07BL



MT08BL



MT19BL



MT20BL

Code:	Description:	Trade Price:
MT05BL	Black L connector	£11.55
MT06BL	Black T connector	£14.58
MT07BL	Black cross connector	£16.23
MT08BL	Black flexi connector	£16.37
MT19BL	Black centre live feed	£9.63
MT20BL	Black track adaptor	£9.90



LED Lighting

IP68 LED CIRCULAR WALK OVER LIGHTS

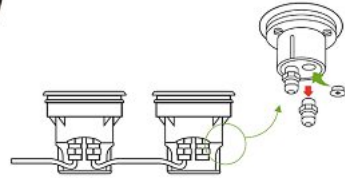


Code:	Description:	Trade Price:
LED0101	IP68 circular in-ground walk over light. White	£36.90
LED0102	IP68 circular in-ground walk over light. Red	£36.90

IP68, aluminium body, 240v.

Bezel dia: 63mm / Body dia: 46mm / Body dia at cable gland: 67mm / Depth: 74mm / Cut out: 58mm

IP67 LED WALK & DRIVE OVER LIGHTS



Code:	Description:	Trade Price:
LED0201	IP67 White LED circular in-ground walk & drive over light	£51.70
LED0202	IP67 White LED square in-ground walk & drive over light	£51.70

IP67, tempered glass, aluminium body, plastic mounting sleeve, max weight: 2500kg, 240v.
 Bezel dia: 108mm / Bezel height: 5mm / Body dia top: 90mm / Body dia base: 57mm / Depth: 74mm

IP65 LED 5 LIGHT WALK OVER KITS



LED0401 White



LED0402 Blue



5 LIGHT KITS

Code:	Description:	Trade Price:
LED0401	White, 5 light LED walk over kit	£77.35
LED0402	Blue, 5 light LED walk over kit	£77.35

IP65 walk over lights, suitable for internal & external installations.
Bezel dia: 40mm / Bezel height: 3mm / Cut out: 35mm / Fitting depth: 50mm / Voltage: 240v

IP65 LED CIRCULAR WALK OVER LIGHTS COLOUR CHANGING KITS

**Code:****LED0901****Description:**

Circular RGB colour changing LED 3 light kit.
Suitable for internal & external installations.

Trade Price:

£52.50

Cut out: 38mm / Bezel height: 6mm / Bezel dia: 48mm / Fitting depth: 70mm / Voltage: 240v / IP65

LED WALK OVER KITS



6 LIGHT KITS

Code:	Description:	Trade Price:
LED2501	6 Light LED kit, white. 3.5w	£56.79
LED2502	6 Light LED kit, blue. 3.5w	£56.79

Product image for illustration purposes only. Actual product may vary.



10 LIGHT KITS

Code:	Description:	Trade Price:
LED2503	10 Light LED kit, white. 4.65w	£80.08
LED2504	10 Light LED kit, blue. 4.65w	£80.08

Product image for illustration purposes only. Actual product may vary.

Specification:

- Plug & play system.
- 40mm diameter.
- 5 metre of cable from transformer to first light.
- 1.5 metre of cable between lights.
- Cut out hole size: 30mm
- Lights IP67 / Driver IP44

LED BRICK LIGHT



Code:	Description:	Trade Price:
LED2301	LED brick light, white LED	£46.48
LED2302	LED brick light, blue LED	£46.48

Stainless steel front, 39 white LED's, 3.2w, IP68, 220-240v mains voltage.
Width: 196mm / height: 70mm / Depth 62mm



IP68 WATERPROOF CONNECTORS



Code:	Description:	Trade Price:
FR00205	IP68, 5 core inline waterproof connector	£9.87



Code:	Description:	Trade Price:
FR00206	IP68, loop in / out waterproof connector.	£12.48

CLASSIC SWAN NECK SIGN LIGHTS



FR9BLSL



FR9SNSL

CLASSIC SWAN NECK SIGN LIGHTS

A classic design of sign lighting perfect for pubs, restaurants and shops

Code:	Description:	Trade Price:
FR9BLSL	Powder coated black sign Light	£65.90
FR9SNSL	Powder coated silver sign Light	£65.90

20" arm / 9" cowl / Besa fixing plate / 100W ES lamp holder.